

Interested Party Reference Number: 20053949

Ref: Morgan and Morecambe Offshore Wind Farms Transmission Assets (EN020032)

– Response to Examining Authority Request at 24th June 2025 Open Floor Hearing #2

7th July, 2025

Dear Examining Authority Panel,

At the Open Floor Hearing (2) held on 25 June 2025 at the Village Hotel, I presented evidence (Appendix 1), outlining a materially beneficial and technically feasible alternative routing option for the Morgan & Morecambe transmission assets via the Hillhouse Technology Enterprise Zone (HTEZ). A member of the Panel requested that I submit further information in support of a potential site visit.

Please find attached a detailed overview of the specific locations and public viewing points relevant to this alternative route.

Appendix 2 contains an annotated map identifying public viewing points and proposed landfill observation zones, with additional detail on route alignment.

This includes sightlines from Rossall Beach across the 2km clear corridor eastward to the western boundary of the HTEZ, as requested by the Panel. This visual corridor demonstrates how the proposed alternative avoids many of the unacceptable adverse impacts associated with the Applicant's current route between the offshore wind farms and the Penwortham National Grid Substation—while also offering a faster, less risky, and more cost-effective solution.

I also refer to submission Rep1-187, in which the principal landowner of HTEZ, NPL Group, extended an open invitation to the Examining Authority to visit the private site. They confirmed their willingness to facilitate such a visit, which would allow the Panel to directly assess the suitability of HTEZ for hosting substation infrastructure and associated transmission works. The site already benefits from significant utilities and highways infrastructure that could support cable routing, access, and construction activities.

Please do not hesitate to contact me if you require any further information.

Yours sincerely,

Cllr Victoria Wells

Bourne Ward, Wyre Borough Council

 wyre.gov.uk

Civic Centre, Breck Road, Poulton-le-Fylde FY6 7PU

Annex 1. Speech to the Examining Authority – Open floor hearing 2, 24.06.25.

Delivered by: Councillor for Bourne Ward, Wyre Council -Site Visit Request

Subject: Morgan and Morecambe Wind Farm Transmission Project (Ref: EN020032)

Further to submission re site visit – see link [Rep1-072](#)

Good evening and thank you for allowing me the opportunity to address you today. I speak in my capacity as the elected Councillor for Bourne Ward on the Wyre Peninsula and a longstanding advocate for sustainable regeneration in our region. I absolutely support the clean energy transition and wholeheartedly embrace the opportunities. Indeed, Wyre Borough Council's Economic development strategy also recognises these opportunities. My purpose today is to respectfully urge you to include three specific locations in your upcoming accompanied site visits as part of the Development Consent Order examination for the Morgan and Morecambe transmission project.

These sites—centred on the Hillhouse Technology Enterprise Zone—are not only materially relevant but potentially transformational. I believe they offer a more efficient, cost-effective and environmentally responsible alternative to the currently proposed 30km transmission route.

[Section 1 – Socioeconomic and Strategic Importance of the Wyre Peninsula]

The Wyre Peninsula has, for too long, borne the burden of post-industrial decline. Tourism, fishing, sea transport and chemical manufacturing—once our economic backbone—have diminished drastically. Today, Wyre is among the most deprived areas nationally. But within that challenge lies a rare opportunity.

The Hillhouse Industrial Zone—within my ward—is not just an underused asset. It is a designated Enterprise Zone, supported by a local Masterplan, complete with planning advantages, existing utilities, and, crucially, a direct link to the National Grid via the 400kV Stanah substation.

[Section 2 – The Case for an Alternative Connection Route]

Despite these obvious advantages, the applicant has offered no clear rationale for dismissing this site or route. The existing transmission corridor from Stanah to the Irish Sea—just 2km in length—is already partially developed. The Walney 2 offshore wind farm is proof of that. By contrast, the current proposal requires a 30km new cable trench through multiple communities and sensitive areas.

Independent stakeholders—such as NPL Hillhouse Thornton Facilities Management—have also submitted evidence supporting this route as more appropriate, citing reduced environmental impacts, faster delivery, and lower costs.

Given the absence of a full evaluation of this option by the applicant, I submit that an on-site assessment by the Panel is not just justified—it is essential.

[Section 3 – The Specific Locations and their Material Importance]

I respectfully request your visit to three locations:

1. Hillhouse Technology Enterprise Zone (HTEZ):

- To directly observe its scale, infrastructure, and proximity to Stanah Substation.
- To appreciate the existing Walney 2 transmission infrastructure and the feasibility of expansion.
- To consider the implications for regional regeneration and potential for supporting environmental remediation of historically contaminated land.

2. Fleetwood Road North / Enterprise Way Junction:

- To see the protected corridor for potential cable routing.
- To assess suitability for trenchless technologies like HDD, with minimal disruption.

3. Rossall Promenade / Beach:

- To evaluate the clear and short 2km corridor from shoreline to substation.
- To compare its impact with the proposed 30km inland trench.

Each of these sites offers unique, material insights into a viable and potentially superior alternative that cannot be gained from maps or documents alone.

Members of the Panel, this is not a mere local preference. It is a credible, deliverable route that may offer better outcomes for both the project and the public. Visiting these sites will equip you with first-hand evidence to determine whether due consideration has truly been given to all reasonable alternatives, as required by law and policy.

I stand ready to assist with access, local knowledge, and local support.

Thank you for your attention—and for your commitment to a thorough, fair and evidence-based examination of this nationally significant infrastructure project.

Appendix 2

Proposed Sites to be Visited

To allow the Examining Authority to properly assess the potential of this alternative route, I have provided below descriptions and maps the following locations that are requested that should be visited:

i) Site Inspection Viewing Route #1 – Along Footpath FP0201010 on Rossall Promenade (between Rossall School buildings and Assheton Observatory), (See Fig 2)

To evidence:

- Potential cable landfall with Irish Sea to the West
- The clear open space 2km potential cable exploration corridor between the Irish Sea and HTEZ to the East. The white industrial buildings in the HTEZ site can be seen.
- The significantly reduced work, environmental impact and cost associated with a 2km cable route versus the applicant's proposed 30km trench

This location is accessible by designated pedestrian footpath along the Rossall Promenade//sea wall (approx. 250m north of the northern car park on Rossall Promenade - FY5 1LP). Vehicle access is available via Thornton Gate or North Promenade.

ii) Site Inspection Viewing Route #2 - From Junction of Fleetwood Road North and Springfield Terrace, FY7 8JT Fleetwood along Footpath FP0201008 to River Wyre and return, (See Fig 3)

To evidence:

- The clear open space 2km potential cable exploration corridor between HTEZ and the Irish Sea to the West. The spire of the Rossall School Chapel Buildings by the Irish Sea shore can be seen from the on-street parking location.
- The potential for underground and over ground cabling routing along and around Footpath FP0201008 from the Fleetwood Road to the existing northerly access into HTEZ near the River Wyre
- Availability of land suitable for Horizontal Directional Drilling (HDD) or other compliant underground cable installation methods across the 2km corridor to Rossall Beach and then into the HTEZ site around Footpath FP0201008.

This location is publicly accessible.

On street parking is available on Fleetwood Road North, immediately south of Springfield Terrace, Thornton.

iii) Site Inspection Viewing Route #3 - Drive South along Fleetwood Road N (B526) between Springfield Terrace FY7 8JT to Entrance of Lancashire Renewables Ltd Waste Recovery Site at 1st exit of mini-roundabout opposite Centurion Park in-progress housing development, (See Fig 4)

To evidence:

- The clear open space 2km potential cable exploration corridor between HTEZ and the Irish Sea to the West. The spire of the Rossall School Chapel Buildings by the Irish Sea shore can be seen.
- The potential to consider an overground cable route across the HTEZ site to the east of Fleetwood Road North.
- The potential to underground cabling in the carriageway and footpaths of the B5268 Fleetwood Road N to join with the protected route of the proposed northern access road into HTEZ to the east of the site entrance of the Lancashire County Council, Lancashire Renewables Ltd waste recovery site.

This location is publicly accessible.

There is on street parking east of the entrance of the Lancashire Renewables Ltd waste recovery site. This area is the start of the protected route for the new northern entrance into the HTEZ site.

iv) Accompanied Site Inspection Viewing Route #4 - Hillhouse Technology Enterprise Zone (HTEZ), FY5 4QP, (See Fig 5)

To evidence:

- Availability of designated development land suitable for converter stations and substation expansion
- Utilities and highways infrastructure for both construction and operation
- Proximity to the National Grid's Stanah 400kV substation, demonstrating potential connectivity
- The existing Walney 2 OWE transmission asset connected to Stanah, evidencing connectivity
- The current access from the north and proposed protected northern access route

The Hillhouse site is private land principally owned by NPL. Controlled access is via Bourne Road, Thornton-Cleveleys, FY5 4QP. I believe that based on NPL's previous statements that they would be very happy to accommodate a visit to the site. See Rep1 -187 by NPL for contact details.

Fig 1 – Overview Map of Suggested Site Viewing Routes

Overview of Beneficial Potential Morgan & Morecambe Offshore Wind Farm Transmission Infrastructure Hosting

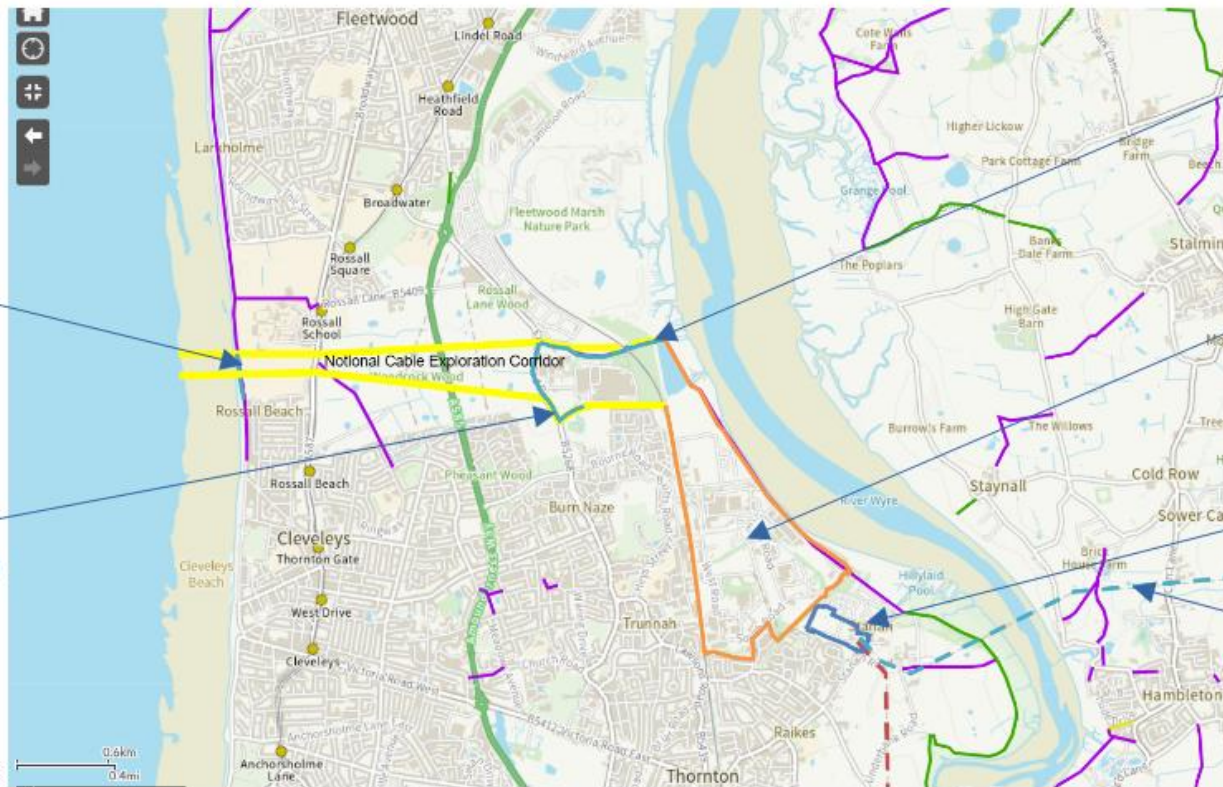
Suggested Site Inspection Viewing Routes

Viewing Route #1

Public Access -
Rossall Beach Promenade,
Footpath - FP0201010
From car park to between
Rossall School &
Assheton Observatory and
return

Viewing Route #3

Public Access -
Drive South
along Fleetwood Road N (B5268)
between Springfield Terrace,
FY7 8JT to Entrance of
Lancashire Renewables Ltd
Waste Recovery Site
at 1st exit of mini-roundabout
opposite Centurion Park
in-progress housing development



Viewing Route #2

Public Access -
Walk along Footpath
FP0201008 from
Fleetwood Rd N
(@Springfield Terrace)
to River Wyre and return

Viewing Route #4

Private Land -
Accompanied tour of
Hillhouse Technology
Enterprise Zone (HTEZ)
- Potential Cable Routing &
Substation Hosting area
connecting to NGET Stanah
substation

National Grid PLC
Stanah Substation

National Grid PLC
400kV Twin Circuit
Overhead Line
Between Stanah
Penwortham & Heysham

Fig 2 – Map of Site Inspection Viewing Route #1 – Along Footpath FP0201010 on Rossall Promenade (between Rossall School buildings and Assheton Observatory)

Beneficial Potential Morgan & Morecambe Offshore Wind Farm Transmission Infrastructure Hosting *Site Inspection Viewing Route #1*

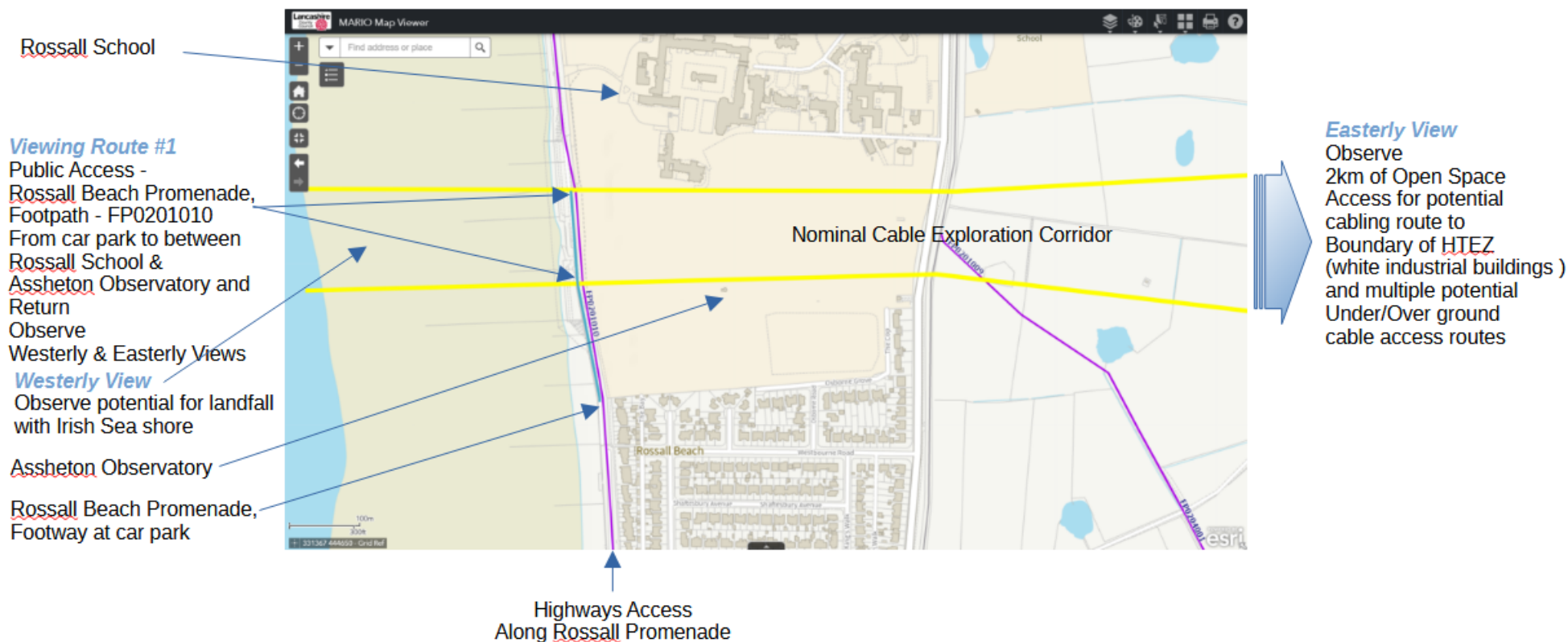


Fig 3 - Map of Site Inspection Viewing Route #2 - From Junction of Fleetwood Road North and Springfield Terrace, FY7 8JT Fleetwood along Footpath FP0201008 to River Wyre and return

Beneficial Potential Morgan & Morecambe Offshore Wind Farm Transmission Infrastructure Hosting

Site Inspection Viewing Route #2

Viewing Route #2

Public Access -
Walk along Footpath FP0201008
from
Fleetwood Rd N
(@Springfield Terrace FY7 8JT)
to River Wyre and return

On street car parking
available on
Fleetwood Road N
Immediately south of
Springfield Terrace

Observe options for
underground/ overground
cabling along and around
footpath.

Public Access limit-
View cable access
route options into
HTEZ to South

**Hillhouse
Technology
Enterprise Zone
(HTEZ) - Private Land**

*Burnhall
Estate*

Lancashire County Council
Lancashire Renewables Limited
Waste Recovery Site

Potential Cable Routing &
Substation Hosting area
connecting to NGET Stanah substation

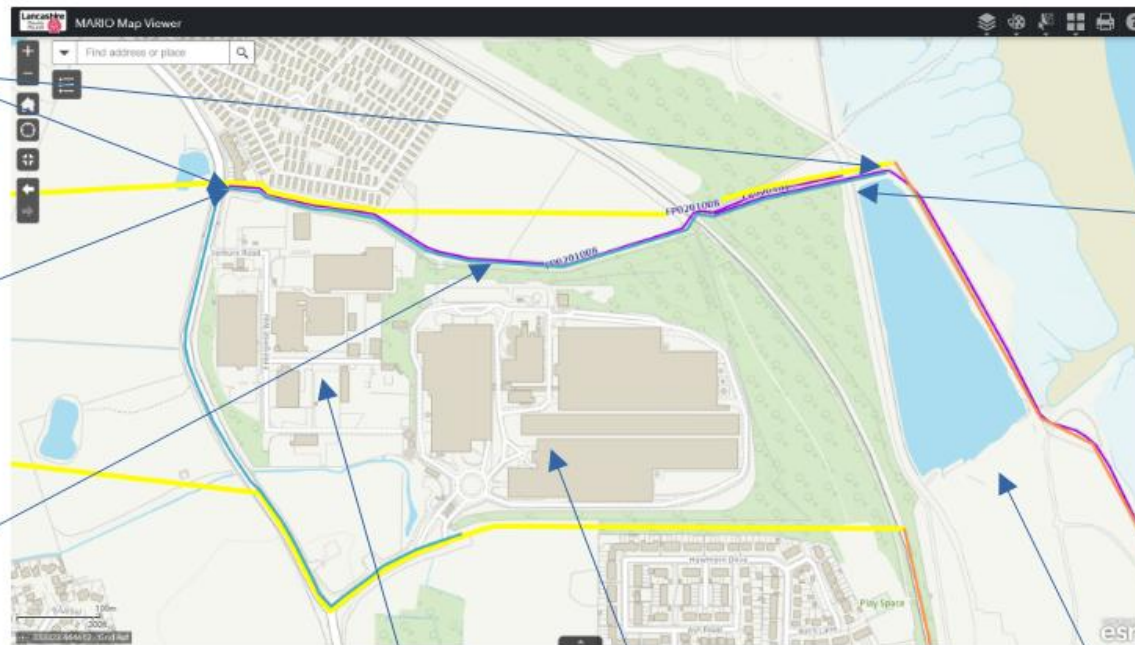


Fig 4 - Map of Site Inspection Viewing Route #3 - Drive South along Fleetwood Road N (B526) between Springfield Terrace FY7 8JT to Entrance of Lancashire Renewables Ltd Waste Recovery Site at 1st exit of mini-roundabout opposite Centurion Park in-progress housing development

Beneficial Potential Morgan & Morecambe Offshore Wind Farm Transmission Infrastructure Hosting *Site Inspection Viewing Route #3*

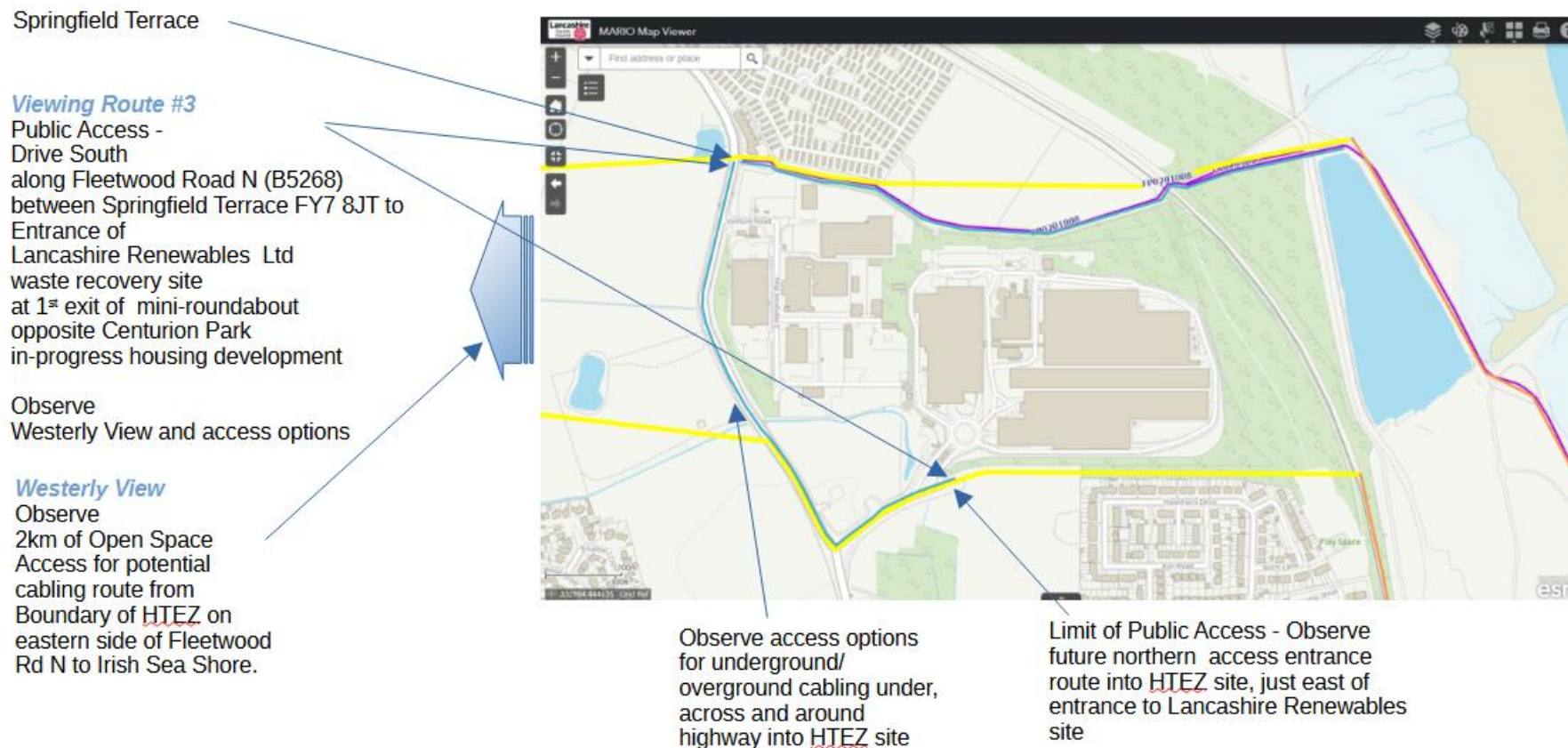
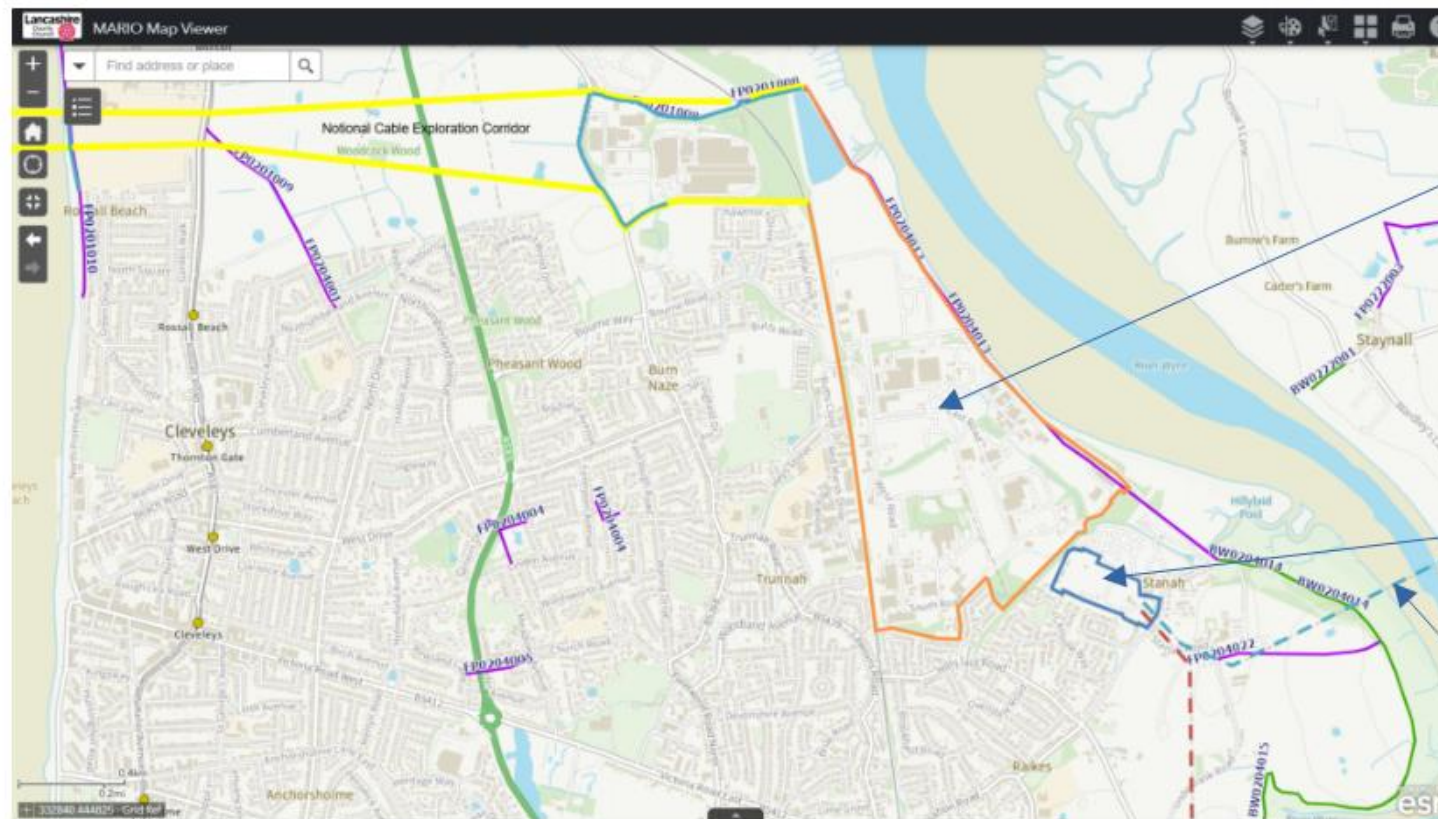


Fig 5 - Map of Accompanied Site Inspection Viewing Route #4 - Hillhouse Technology Enterprise Zone (HTEZ), FY5 4QP

Beneficial Potential Morgan & Morecambe Offshore Wind Farm Transmission Infrastructure Hosting

Site Inspection Viewing Route #4 – On Private Land



Viewing Route #4

Private Land –

Escorted tour of Hillhouse Technology Enterprise Zone (HTEZ) - Potential Cable Routing & Substation Hosting area connecting to NGET Stanah substation

Access by Arrangement with Mr M. O'Brien
NPL Group Director
For Hillhouse site
See Rep1-187 for contact details

National Grid PLC
Stanah Substation

National Grid PLC
400kV Twin Circuit
Overhead Line
Between Stanah
Penwortham & Heysham